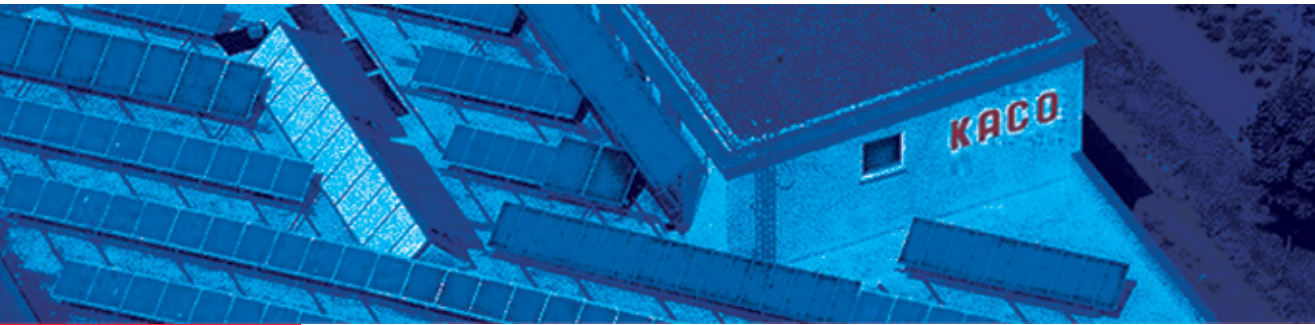
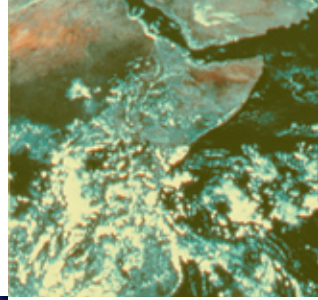


KACO blueplanet 150 | xi grid-tied inverter



- MADE IN GERMANY for over 60 years
- NEMA 3R enclosure for all applications
- “Best in Class” CEC efficiency rating
- Easy to read LCD display
- GDFI ground fault protection
- BiSi grid monitoring (anti-islanding)
- **easy**Install installation
- **easy**Link data interface
- **easy**Swap 10 year warranty



tested to UL 1741



K A C O
S O L A R

KACO blueplanet 1501xi grid-tied inverter

Model number	blueplanet 1501xi
DC – input data	
Max. DC power	1.8 kW _p
MPP range	125 - 300 V _{dc}
Max. DC input voltage	400 V _{dc}
Max. array short circuit current	15 A _{dc}
AC – output data	
CEC continuous AC output @ 40°C	1500 W
UL continuous AC output @ 25°C	
Max. utility backfeed current	0 A _{ac}
Max. overcurrent protection	15 A _{ac}
AC operating voltage range	211 – 264 V
Frequency	59.3 – 60.5 Hz
CEC rated efficiency	94%
General data	
Grid monitoring	BISI in accordance with UL 1741
Wiring concept	Electrically isolated DC/DC converter with downstream inverter
Islanding protection	Active anti islanding
Safety compliance	UL 1741, IEEE 929 & 519, NEC 690
DC reverse polarity protection	YES
Ground fault protection	YES - internal GFDI
Temperature protection	YES - power de-rating and emergency shut down
Visual displays	Backlit LCD display 2x16 characters
Accessory interfaces	RS232 / RS485 with easyLink - Optional S ₀ interface for large displays
Connections	AC & DC connection with clamps
Ambient operating temperature	-5°F - +149°F -20°C - + 65°C
Cooling	Ultimate reliability - True convection
Enclosure type	NEMA 3R / IP 54
Specifications	
Dimensions	17 3/4" x 13 3/8" x 7 7/8"
Weight	30.8 lbs
Power Consumption	Night - 0W, Standby < 5W

KACO's electrically isolated inverters meet all the expectations you place on top-quality, modern inverters: easy to use, innovative technology, maximum efficiency and durability are all features of our grid-tie inverters. At KACO "Made in Germany" are not just empty words. All processes from development to production take place in Germany. KACO has been producing power supplies of all kinds for over 60 years. Our decades of experience are the basis for the successful **blueplanet** inverter series.

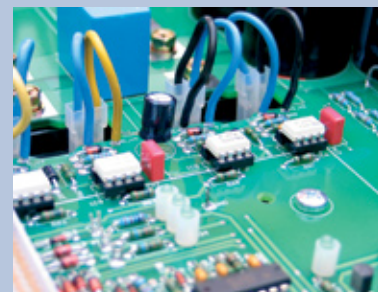
Our **easyInstall** system makes installation of the inverters extremely simple with our innovative, lightweight and easy mounting bracket. Cables are connected directly inside the inverter with screw clamps. The inverter's hinged housing door allows easy access to all PV terminals to ensure our **easyInstall** promise. In addition, KACO grid tie inverters are light enough for a single person to install.

When choosing accessories to connect to your **blueplanet** inverter, the **easyLink** interface system lets you choose between the various connection ports with ease. You can select which interface protocol, RS232 or RS485, should be used so no extra communication card is needed. The new design integrates these new features in an appealing way, while adding a very high end look and feel. With a NEMA 3R / IP54 enclosure the device is suitable to install in harsh conditions.

KACO also makes no compromises when it comes to warranties and service. The 10 year **easySwap** warranty is the simplest of its kind which means we offer a no hassle return policy. Simply call us and we'll swap your damaged or defective inverter with a functional unit.



K A C O
S O L A R



Distributed by:



Printed on 100% post consumer material

1002B O'Reilly Ave., The Presidio, San Francisco, CA 94129 •
T: +1 (866) KACO SOLAR F: +1 (415) 931 1688 •
info@kacosolar.com www.kacosolar.com